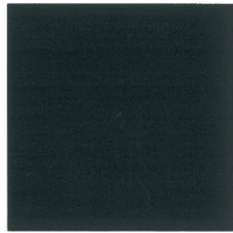
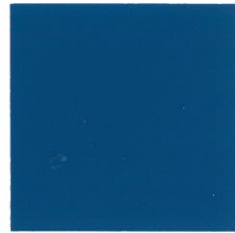


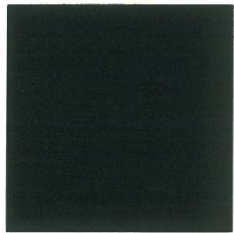
DC 855 - graphite blue



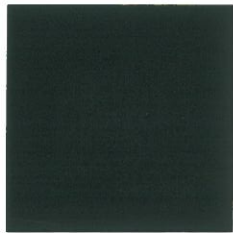
RAL 5011 - steel blue



RAL 5010 - gentian blue



DC 875 - English green



DC 879 - Dutch green



DC 859 - dark green

RAL 9010 - pure white



DC 803 - ivory

DC 841 - fog white



DC 814 - summer yellow

DC 831 - dust grey



DC 837 - ochre

DC854 - navy blue



DC 861 - cream white



RAL 9001 - cream



DC 852 - middle blue



DC 829 - shell



RAL 9018 - papyrus white



DC 842 - orange*

DC 881 - Polar white



RAL 1013 - pure white



DC 811 - licht grey

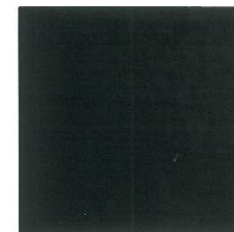


DC 845 - red*

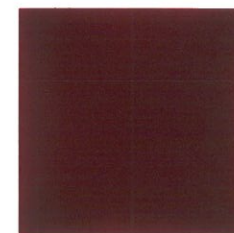
DC 800 - white



DC 839 - off white



DC 801 - black



DC 856 - bordeaux



Actual colours may vary from samples. For colours marked with * we recommend ochre (DC 837) as first coat.

De IJssel Coatings supplies a range of coatings and finishes under the brand name of Double Coat, Ilmopox and Variopox